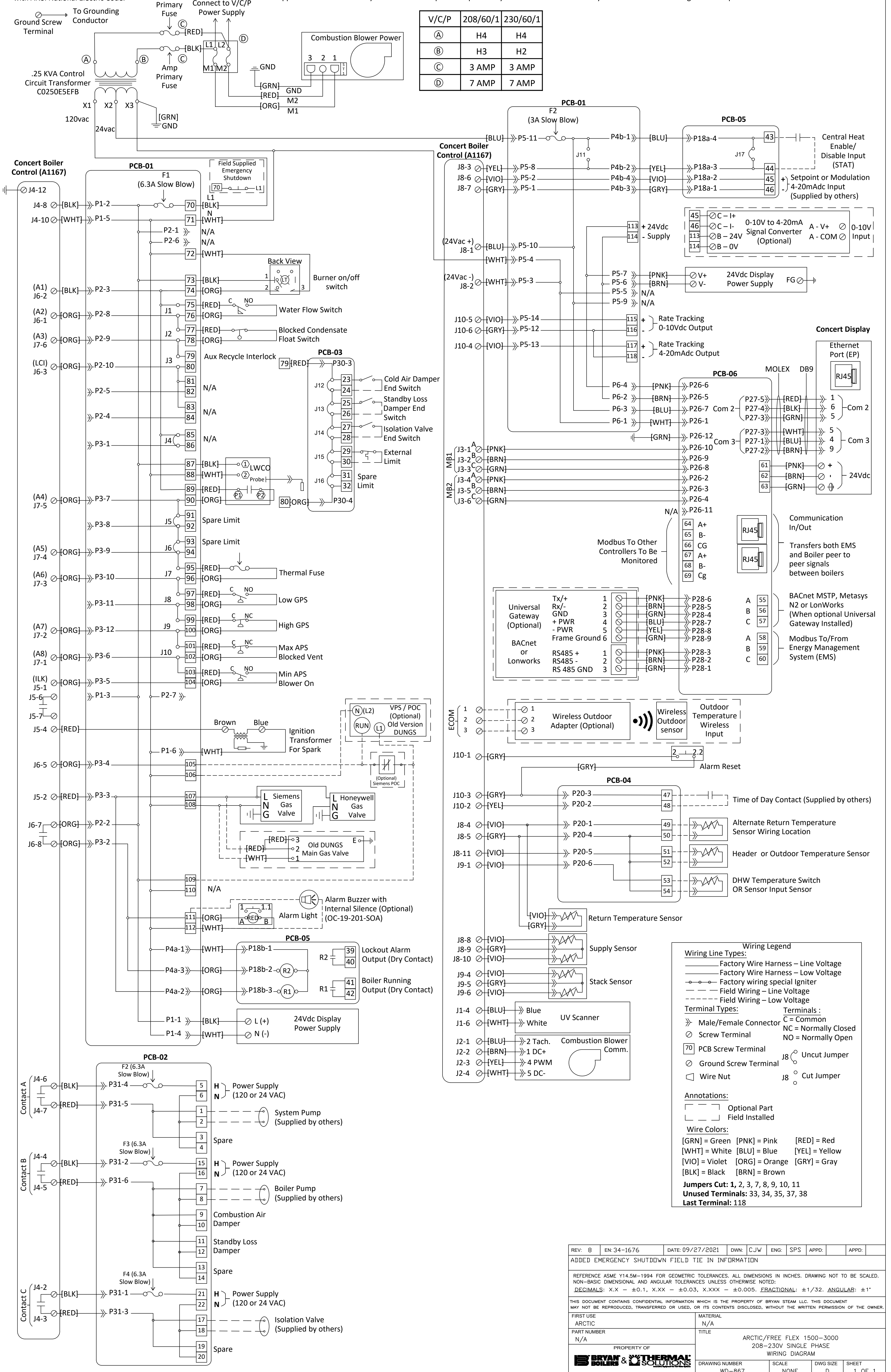


Boiler must be grounded in accordance with ANSI National Electric Code.

IMPORTANT: The wiring shown for devices supplied and installed by others is suggested only. Certification of, and responsibility for the correctness of the wiring is the responsibility of the supplier of these devices. Bryan Steam LLC accepts no responsibility for the correctness or safety or execution of this wiring or of the operation of such devices.

V/C/P	208/60/1	230/60/1
(A)	H4	H4
(B)	H3	H2
(C)	3 AMP	3 AMP
(D)	7 AMP	7 AMP



REV: 8	EN: 34-1676	DATE: 09/27/2021	DWN: C/JW	ENG: SPS	APPD:	APPD:
ADDED EMERGENCY SHUTDOWN FIELD TIE IN INFORMATION						
REFERENCE ASME Y14.5M-1994 FOR GEOMETRIC TOLERANCES. ALL DIMENSIONS IN INCHES. DRAWING NOT TO BE SCALED. NON-BASIC DIMENSIONAL AND ANGULAR TOLERANCES UNLESS OTHERWISE NOTED: DECIMALS: X.X - ±0.1, X.XX - ±0.03, X.XXX - ±0.005. FRACTIONAL: ±1/32. ANGULAR: ±1'						
THIS DOCUMENT CONTAINS CONFIDENTIAL INFORMATION WHICH IS THE PROPERTY OF BRYAN STEAM LLC. THIS DOCUMENT MAY NOT BE REPRODUCED, TRANSFERRED OR USED, OR ITS CONTENTS DISCLOSED, WITHOUT THE WRITTEN PERMISSION OF THE OWNER.						
FIRST USE ARCTIC	MATERIAL N/A	PROPERTY OF BRYAN STEAM LLC & LYTHERMAL SOLUTIONS				
PART NUMBER N/A	TITLE ARCTIC/FREE FLEX 1500-3000 208-230V SINGLE PHASE WIRING DIAGRAM	DRAWING NUMBER WD-867	SCALE NONE	DWG SIZE D	SHEET 1 OF 1	